



SightSurvey™ Security Planning

Design in minutes. Secure Forever.

A Rapid Design Tool for Automated Outdoor Surveillance Systems

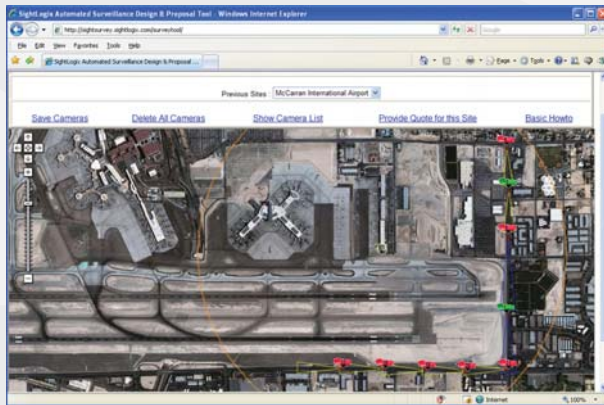


Figure 1: Uses the simple Google™ Maps interface

SightLogix introduces another industry first – a powerful tool that reduces weeks spent in camera layout and system specification, to minutes. System integrators and security consultants have had to spend days to survey a site, and weeks to specify optimal equipment specifications to meet desired levels of security. Until now.

SightSurvey™, uses a patented process to leverage Google™ Maps and SightLogix Inc's video surveillance expertise to develop a highly efficient camera layout tool. Complete sites can be designed with just 2 clicks per camera. System integrators and consultants can now walk end-users through the process of system design interactively and leave them with a map-based security layout and preliminary system pricing, without ever leaving the boardroom!

On-the-spot System Quotation

Integrators can now provide on-the-spot quotation and system configuration to customers, even at their first meeting. SightSurvey™ provides a one-click option to generate a full system proposal, pre-formatted for the end-user. While competing integrators are seeking

permissions for site visits and follow on meetings, SightLogix integrators will have already provided a full proposal and be off to their next customer meeting. Only SightSurvey™ provides this power and speed to move the integrators' business.

Current Process Tedious

Current best practices for intelligent video system specification requires days or weeks of time spent in generating a preliminary system design. This process typically includes ground surveys, graphical site layouts, and an iterative process for selecting the numerous intelligent video surveillance components provided by multiple vendors. As a result, integrators and consultants spend a lot of time in evaluating different configurations, cameras, video analytics, IT equipment, communication infrastructure, etc.

Bringing Security Planning to the 21st Century

The SightSurvey™ software combines advanced geospatial (GIS) technologies with SightLogix Inc's industry leading innovations in automated surveillance, to provide an intuitive, web-based tool for quick and effective security designs. SightSurvey™'s built-in intelligence converts simple user specifications into detailed camera configuration and installation settings.

SightSurvey Benefits

- ▣ Reduce design time from days to minutes
- ▣ Visual, intuitive security design using actual site image
- ▣ Instant, intuitive proposals to customers
- ▣ Powerful risk assessment tool
- ▣ Unique benefit to SightLogix integrators

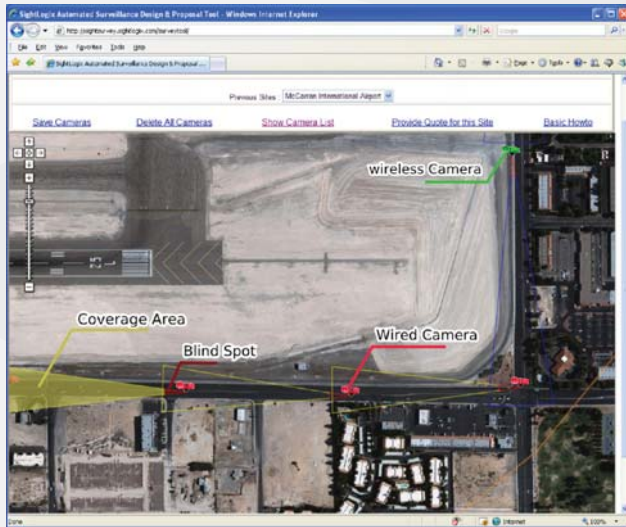


Figure 2: Zoomed view of typical SightSurvey™ layout

Minutes to Design, Hours to Install

SightSurvey™ has pioneered a 2-click process to design a camera on a given user facility. Using the already popular and intuitive Google™ Maps user interface, SightSurvey™ allows one click camera localization and one-click camera orientation. Even large facilities such as airport perimeters, can be designed in 10-15 minutes. As shown in Figure 2, SightSurvey™ visually displays each camera location and its area of automated detection.

Auto-generated Camera Configuration

SightSurvey™ designs provide all parameters needed for camera installation. A one-click option generates a list of all cameras, their mounting heights, GPS locations, orientation, tilt from horizon and exact detection footprint dimensions (Figure 3). This data is all that an installer needs to have an intelligent video system running at your facility.

Intuitive Risk Assessment Tool

SightSurvey™ results provide an intuitive assessment of facility areas under surveillance, as well as those not covered. Using the visual security design provided by SightSurvey™, analysts can quickly determine areas of vulnerability, response times for different security events and hence compare different security designs easily.

Get SightLogix Certified

SightSurvey™ access is available to SightLogix Certified Integrators and representatives. It only takes a one-day training to get SightLogix Certified. Call SightLogix to see how to get started.

Camera List for McCarran International Airport										
#	Cam ID	Type	Name	FOV	Location	Height(m)	Tilt Angle(°)	Pan Angle (°)	Far End Dist(m)	Close End Dist(m)
1	4	IR Wired Cam		14	36.086078,-115.118909	7	-6	-87.7	285.9	35.1
2	5	IR Wireless Cam		14	36.083338,-115.118737	7	-6	-90	305	35.1
3	6	Wired Visible Cam		11	36.080459,-115.11878	7	-4.5	-90.9	548.3	49
4	7	Wireless Visible Cam		15	36.075326,-115.118909	7	-6	-88	432.7	34
5	15	Wired Dome	Dome	E	36.079141,-115.128822	7	T	-42.9	1322.3	NaN
6	18	IR Wired Cam		14	36.071649,-115.125175	7	-5.5	179.1	327.2	38.7
7	19	IR Wired Cam		14	36.071753,-115.128565	7	-5.5	179.1	327.1	38.7
8	20	IR Wired Cam		14	36.07158,-115.121999	7	-5.5	177.5	327.6	38.7
9	21	IR Wired Cam		14	36.071719,-115.118737	7	-5.5	-179.5	327.3	38.7
10	22	IR Wired Cam		14	36.071788,-115.131912	7	-5.5	179.1	327	38.7

Figure 3: Auto-generated camera configuration table