



Rapid Deployment Kit - W4C

Wireless Self-Contained Portable Perimeter & Scene Monitoring Outdoor Surveillance System



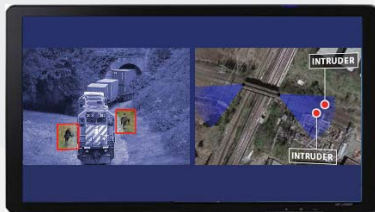
High-Tech
Surveillance
Equipment
Available to First
Responders through DHS

Designed for First Responders

SightLogix' RDK-W4C is a long-range self-contained portable perimeter-intrusion and scene monitoring surveillance kit. It consists of four (4) intelligent outdoor portable wireless surveillance cameras coupled with a portable Command Center ruggedized laptop workstation providing real-time GPS situational awareness and streaming video with in-camera analytics.

Simple 3-Step Application Process

1. **Register** to receive critical program information. SightLogix will notify you of upcoming deadlines.
2. **Determine Eligibility.** SightLogix will walk you through the eligibility criteria.
3. **Apply.** SightLogix will work with you to maximize your chances of taking advantage of this valuable opportunity.



Perimeter and scene monitoring surveillance requires a pre-emptive posture that provides reliable pre-incident awareness, geo-spatial target tracking, and interoperability. The RDK-W4C provides reliable and long range detection automation with in-camera analytics and GPS situational awareness, providing force multiplication and a real time operational picture of targets and/or resources on one screen.

Mobility & Rapid Deployment

One-person portability, zero-infrastructure, 15-minute deployment and 2-hour training makes RDK-W4C ideal for first responders. It is designed to be deployed in outdoor areas or in those situations requiring covert surveillance operations and scene monitoring where long-range visual detection is critical.

GPS Awareness for Regional Response

The SightLogix RDK-W4C provides instant GPS situational awareness of all targets or on-scene resources directly from the cameras to first responders. It enables real-time, coordinated activities of several mission partners.

Interoperability

SightLogix' open-standard, IP-based system is designed to seamlessly integrate with public and corporate IT networks, without middleware or additional integration. SightLogix supports the latest industry standards for data and communications, including video and data encryption as well as device authentication to enable an interoperable yet secure IT appliance. This allows emergency responders to share visual and geospatial information with appropriate resources during events which require safe, effective, immediate responses.

RDK - W4C Uses:

- Terrorist Deterrence & Detection.
- Critical Infrastructure & Key Resources Protection.
- Long Range Perimeter & Buffer Zone Protection
- Scene Monitoring at Critical Events
- Covert Surveillance - Active Countermeasures
- Wide Area Virtual Fence - Passive Countermeasures
- Mobile Virtual Partner

CEDAP Application Overview on Reverse Side

CEDAP Program

Overview

The Department of Homeland Security's (DHS) Commercial Equipment Direct Assistance Program (CEDAP) is an important component of a larger, coordinated effort to strengthen the nation's overall level of preparedness. CEDAP provides specialized commercial equipment and related training directly to smaller jurisdictions and eligible metropolitan areas at no cost to recipient.

Purpose

The CEDAP direct assistance program complements the Department of Homeland Security's other major grants programs to enhance regional response capabilities, mutual aid, and interoperable communications by providing technology and equipment, along with the training required to operate that equipment, to law enforcement and first responders in smaller jurisdictions and certain metropolitan areas.

CEDAP Application Process

1. Registration

Registering with CEDAP at www.rkb.us is the first step in the application process. Agencies can also register at www.SightLogix.com/CEDAP to receive assistance in applying for the SightLogix RDK-W4C consisting of 4 intelligent outdoor portable wireless surveillance cameras, tripods, and ruggedized laptop Command Center, and to receive critical Program notification including upcoming deadlines.

2. Eligibility

Eligible applicants include law enforcement agencies and other emergency responder agencies (e.g., Special Police, Campus Police, Native American Tribal Police, HAZMAT, as well as any non-profit Fire, EMS, and Public Safety agencies) who provide justification via online application that the equipment will be used to improve their capability and capacity to respond to a significant incident or to work with other first responders. SightLogix will walk you through the eligibility process.

3. Application

A simple application must be completed online at the RKB website. No paper submittals will be accepted. Visit the SightLogix.com/CEDAP website for free application assistance. SightLogix will work with you to maximize your chances of taking advantage of this valuable opportunity. It is important to note that the **application period is very limited**. Register to be notified when the application period has commenced.



You Are Eligible If:

- ✓ You are a First Responder
- ✓ You are NIMS compliant
- ✓ You have been unable to acquire equipment through other DHS programs
- ✓ You have critical infrastructure and/or key resources in your jurisdiction
- ✓ You have collaborative opportunities with other first responders

Register at www.SightLogix.com/CEDAP for simple, step-by-step application assistance.

Visit the CEDAP website at www.rkb.us to apply.

This Equipment is Available through CEDAP for a Very Limited Time.